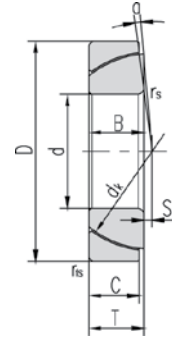


GAC...F SERIES – METRIC



Specifications

- Sliding Surface: PTFE Lined Steel Outer on Chrome Plated Ball
- Maintenance Free - Low Friction
- Suitable for Radial Loads and single direction Axial (Thrust) Loads

Part #	Ref #	Dimensions (mm)									Load Ratings kN		Weight LBS
		d	D	B	C	T	d _k	S	r _s , r _{1s} min	α ≈	Dynamic	Static	
GAC25F	GAC25T	25	47	15	14	15	42	0.6	1	2.5	75	149	.325
GAC28F	GAC28T	28	52	16	15	16	47	1	1	2	90	179	.410
GAC30F	GAC30T	30	55	17	15	17	49.5	1.3	1	4.5	95	188	.460
GAC32F	GAC32T	32	58	17	16	17	52	2	1	2	106	211	.530
GAC35F	GAC35T	35	62	18	16	18	55.5	2.1	1	4	117	234	.590
GAC40F	GAC40T	40	68	19	17	19	62	2.8	1	3.5	139	277	.720
GAC45F	GAC45T	45	75	20	18	20	68.5	3.5	1	3	162	324	.920
GAC50F	GAC50T	50	80	20	19	20	74	4.3	1	1.5	185	370	1.00
GAC55F	GAC55T	55	90	23	20	23	82	5	1.1	4	216	432	1.42
GAC60F	GAC60T	60	95	23	21	23	88.5	5.7	1.1	2.5	245	489	1.57
GAC65F	GAC65T	65	100	23	22	23	93.5	6.5	1.1	1	271	542	1.67
GAC70F	GAC70T	70	110	25	23	25	102	7.2	1.1	2	309	618	2.30
GAC75F	GAC75T	75	115	25	24	25	107	7.9	1.1	1	339	676	2.47
GAC80F	GAC80T	80	125	29	25.5	29	115	8.6	1.1	3.5	387	772	3.40
GAC85F	GAC85T	85	130	29	26.5	29	122	9.4	1.1	2	426	851	3.54
GAC90F	GAC90T	90	140	32	28	32	128.5	10.1	1.5	3.5	474	948	4.60
GAC95F	GAC95T	95	145	32	29.5	32	135	10.8	1.5	2	525	1049	4.88
GAC100F	GAC100T	100	150	32	31	32	141	11.6	1.5	0.5	577	1151	5.15
GAC105F	GAC105T	105	160	35	32.5	35	148	12.3	2	2	634	1267	6.45
GAC110F	GAC110T	110	170	38	34	38	155	13	2	3	695	1380	8.10
GAC120F	GAC120T	120	180	38	37	38	168	14.5	2	0.5	820	1630	8.73
GAC130F	GAC130T	130	200	45	43	45	188	18	2.5	1	1060	2130	13.02
GAC140F	GAC140T	140	210	45	43	45	198	19	2.5	1	1120	2240	13.92
GAC150F	GAC150T	150	225	48	46	48	211	20	3	1	1280	2550	17.60
GAC160F	GAC160T	160	240	51	49	51	225	20	3	1	1445	2900	20.72
GAC170F	GAC170T	170	260	57	55	57	246	21	3	1	1780	3560	27.00
GAC180F	GAC180T	180	280	64	61	64	260	21	3	1	2090	4170	38.30
GAC190F	GAC190T	190	290	64	62	64	275	26	3	0.5	2250	4490	40.00
GAC200F	GAC200T	200	310	70	66	70	290	26	3	1.5	2520	5040	49.50

Common Interchanges (1" Bore): GE 100SW

