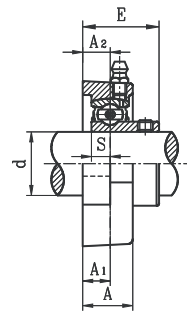
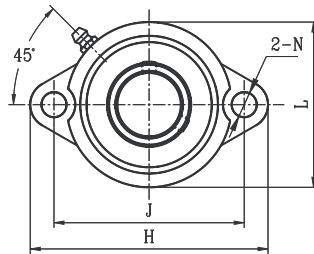
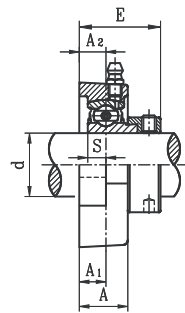


# TWO BOLT FLANGE UNITS

## SBLF LIGHT DUTY SET SCREW LOCKING TYPE



SBLF



SALF

- Cast iron housing
- Narrow inner ring bearing

Unit No.	Shaft Dia. d		Dimension (in) (mm)								Bolt Size (in)	Bearing No.	Housing No.	Weight (lb)		
	(in.)	(mm)	H	J	L	A <sub>2</sub>	A	A <sub>1</sub>	N	S					E	
<b>SBLF201G</b>		12														
<b>201-8G</b>	1/2	15														0.590
<b>202G</b>			3-3/16	2-1/2	2-7/32	3/8	23/32	3/8	5/16	1/4	1					0.570
<b>202-10G</b>	5/8	17	81	63.5	56	9.5	18	9.5	8	6.0	25.5					0.550
<b>203G</b>																
<b>203-11G</b>	11/16															
<b>SBLF204-12G</b>	3/4	20	3-9/16	2-13/16	2-13/32	7/16	25/32	7/16	13/32	9/32	1-5/32					0.720
<b>204G</b>			90	71.5	61	11	20	11.0	10	7.0	29.0					
<b>SBLF205-14G</b>	7/8															
<b>205G</b>		25	3-3/4	3	2-17/32	7/16	25/32	7/16	13/32	5/16	1-7/32					0.83
<b>205-15G</b>	15/16		95	76	64	11	20	11.0	10	7.5	30.5					
<b>205-16G</b>	1															
<b>SBLF206-18G</b>	1-1/8	30	4-15/32	3-9/16	3	15/32	7/8	15/32	15/32	5/16	1-11/32					1.230
<b>206G</b>			113	90.5	76	12	22.5	12.0	12	8.0	34.0					
<b>206-19G</b>	1-3/16															
<b>206-20G</b>	1-1/4															
<b>SBLF207-20G</b>	1-1/4	35	4-13/16	3-15/16	3-1/2	1/2	15/16	17/32	15/32	11/32	1-7/16					1.760
<b>207-21G</b>	1-5/16		122	100	89	13	24	13.0	12	8.5	36.5					
<b>207-22G</b>	1-3/8															
<b>207G</b>																
<b>207-23G</b>	1-7/16															

## SALF LIGHT DUTY ECCENTRIC LOCKING COLLAR TYPE

Unit No.	Shaft Dia. d		Dimension (in) (mm)								Bolt Size (in)	Bearing No.	Housing No.	Weight (lb)		
	(in.)	(mm)	H	J	L	A <sub>2</sub>	A	A <sub>1</sub>	N	S					E	
<b>SALF201G</b>		12														0.660
<b>201-8G</b>	1/2	15														0.640
<b>202G</b>			3-3/16	2-1/2	2-7/32	3/8	23/32	3/8	5/16	1/4	1-1/4					0.620
<b>202-10G</b>	5/8	17	81	63.5	56	9.5	18	9.5	8	6.5	31.6					
<b>203G</b>																
<b>203-11G</b>	11/16															
<b>SALF204-12G</b>	3/4	20	3-9/16	2-13/16	2-13/32	7/16	25/32	7/16	13/32	5/16	1-11/32					0.730
<b>204G</b>			90	71.5	61	11.0	20	11.0	10	7.5	34.4					
<b>SALF205-14G</b>	7/8															
<b>205G</b>		25	3-3/4	3	2-17/32	7/16	25/32	7/16	13/32	5/16	1-11/32					0.93
<b>205-15G</b>	15/16		95	76.0	64	11.0	20	11.0	10	7.5	34.4					
<b>205-16G</b>	1															
<b>SALF206-18G</b>	1-1/8	30	4-15/32	3-9/16	3	15/32	7/8	15/32	15/32	11/32	1-17/32					1.320
<b>206G</b>			113	90.5	76	12.0	22.5	12.0	12	9.0	38.7					
<b>206-19G</b>	1-3/16															
<b>206-20G</b>	1-1/4															
<b>SALF207-20G</b>	1-1/4	35	4-13/16	3-15/16	3-1/2	17/32	15/16	17/32	15/32	3/8	1-21/32					1.870
<b>207-21G</b>	1-5/16		122	100.0	89	13.0	24	13.0	12	9.5	42.4					
<b>207-22G</b>	1-3/8															
<b>207G</b>																
<b>207-23G</b>	1-7/16															

- \* Full cover metal shroud seal standard. Full contact rubber seal (2RS suffix) optional.  
Non-relubricatable units also available (remove G suffix). Contact factory.

