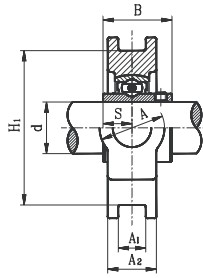
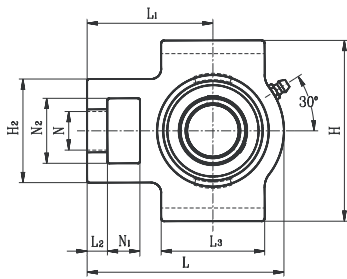


# TAKE UP UNITS

## UCSTX MEDIUM DUTY SET SCREW LOCKING TYPE - WIDE SLOT



- Cast iron housing – wide slot
- Wide inner ring bearing

Unit No.	Shaft Dia. d (in.) (mm)	Dimension (in) (mm)															Bearing No.	Housing No.	Weight (lb)
		N1	L2	H2	N2	N	L3	A1	H1	H	L	A	A2	L1	B	S			
UCSTX05-16 UCSTX05-25MM	1 25	21/32 16	13/32 10	2-7/32 56	1-15/32 37	7/8 22	2-1/4 57	9/16 13.5	3-17/32 89	4-1/32 102	4-15/32 113	1-15/32 37	1-1/8 28	2-25/32 70	1-1/2 38.1	21/32 15.9	UCX05-16 UCX05-25MM	ST206	2.866
UCST206-18 UCSTX06-19 UCSTX06-20 UCSTX06-30MM	1 1/8 1 3/16 1 1/4 30	21/32 16	17/32 13	2-17/32 64	1-15/32 37	7/8 22	2-17/32 64	9/16 13.5	3-17/32 89	4-1/32 102	5-3/32 129	1-15/32 37	1-3/16 30	3-3/32 78	1-11/16 42.9	23/32 17.5	UC206-18 UCX06-19 UCX06-20 UCX06-30MM	ST207	3.747
UCSTX07-22 UCSTX07-23 UCSTX07-35MM	1 3/8 1 7/16 35	3/4 19	21/32 16	3-9/32 83	1-15/16 49	1-5/32 29	3-9/32 83	23/32 17.5	4-1/32 102	4-1/2 114	5-11/16 144	1-15/16 49	1-5/16 33	3-15/32 88	1-15/16 49.2	3/4 19	UCX07-22 UCX07-23 UCX07-35MM	ST208	5.511
UCSTX08-24 UCSTX08-40MM	1 1/2 40	3/4 19	21/32 16	3-9/32 83	1-15/16 49	1-5/32 29	3-9/32 83	23/32 17.5	4-1/32 102	4-5/8 117	5-11/16 144	1-15/16 49	1-13/32 35	3-7/16 87	1-15/16 49.2	3/4 19	UCX08-24 UCX08-40MM	ST209	5.511
UCSTX09-26 UCSTX09-27 UCSTX09-28 UCSTX09-45MM	1 5/8 1 11/16 1 3/4 45	3/4 19	21/32 16	3-9/32 83	1-15/16 49	1-5/32 29	3-13/32 86	23/32 17.5	4-1/32 102	4-5/8 117	5-7/8 149	1-15/16 49	1-15/32 37	3-9/16 90	2-1/32 51.6	3/4 19	UCX09-26 UCX09-27 UCX09-28 UCX09-45MM	ST210	5.732
UCSTX10-30 UCSTX10-31 UCSTX10-32 UCSTX10-50MM	1 7/8 1 15/16 2 50	1 25	3/4 19	4-1/32 102	2-17/32 64	1-13/32 35	3-3/4 95	1-3/32 27	5-1/8 130	5-3/4 146	6-3/4 171	2-17/32 64	1-1/2 38	4-3/16 106	2-7/32 55.6	7/8 22.2	UCX10-30 UCX10-31 UCX10-32 UCX10-50MM	ST211	8.818
UCSTX11-34 UCSTX11-35 UCSTX11-36 UCSTX11-55MM	2 1/8 2 3/16 2 1/4 55	1-9/32 32	3/4 19	4-1/32 102	2-17/32 64	1-13/32 35	4-1/32 102	1-3/32 27	5-1/8 130	5-3/4 146	7-21/32 194	2-17/32 64	1-21/32 42	4-11/16 119	2-19/32 65.1	1 25.4	UCX11-34 UCX11-35 UCX11-36 UCX11-55MM	ST212	10.802
UCSTX12-38 UCSTX12-39 UCSTX12-60MM	2 3/8 2 7/16 60	1-9/32 32	27/32 21	4-3/8 111	2-25/32 70	1-5/8 41	4-25/32 121	1-3/32 27	5-31/32 151	6-19/32 167	8-27/32 224	2-25/32 70	1-3/4 44	5-13/32 137	2-19/32 65.1	1 25.4	UCX12-38 UCX12-39 UCX12-60MM	ST213	11.904
UCSTX13-40 UCSTX13-65MM	2 1/2 65	1-9/32 32	27/32 21	4-3/8 111	2-25/32 70	1-5/8 41	4-25/32 121	1-3/32 27	5-31/32 151	6-19/32 167	8-27/32 224	2-25/32 70	1-13/16 46	5-13/32 137	2-15/16 74.6	1-3/16 30.2	UCX13-40 UCX13-65MM	ST214	15.21
UCSTX14-43 UCSTX14-44 UCSTX14-70MM	2 11/16 2 3/4 70	1-9/32 32	27/32 21	4-3/8 111	2-25/32 70	1-5/8 41	4-25/32 121	1-3/32 27	5-31/32 151	6-19/32 167	9-5/32 232	2-25/32 70	1-29/32 48	5-1/2 140	3-3/32 77.8	1-5/16 33.3	UCX14-43 UCX14-44 UCX14-70MM	ST215	16.31
UCSTX15-47 UCSTX15-48 UCSTX15-75MM	2 15/16 3 75	1-9/32 32	27/32 21	4-3/8 111	2-25/32 70	1-5/8 41	4-25/32 121	1-1/8 28	6-1/2 165	7-9/32 184	9-9/32 235	2-25/32 70	1-29/32 48	5-1/2 140	3-9/32 82.6	1-5/16 33.3	UCX15-47 UCX15-48 UCSTX15-75MM	TX015	16.95

\* Dual seal standard. Triple lip seal (R3 suffix) optional.

